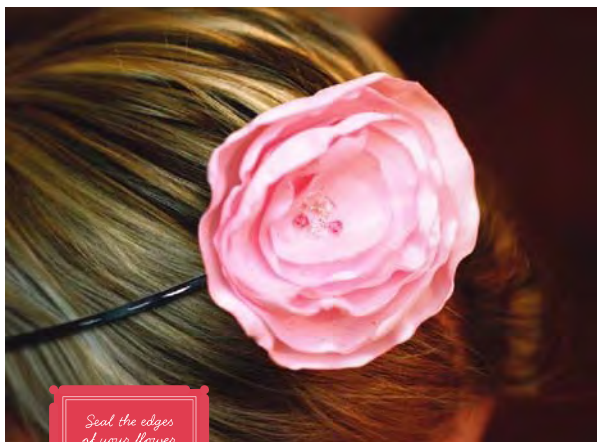


Flower Headbands

BY ANA CABRERA

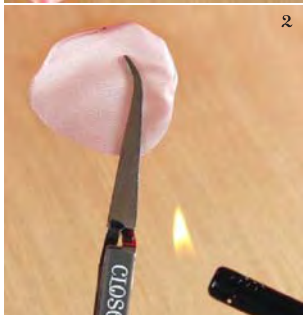




*Seal the edges
of your flower
petals with a
clear glaze, or
by heating them
with a flame or
embossing gun.*



1



2



3

Flowers are about 5 1/2" across
Headband: Goody; Satin: Fabric supply; Felt,
beads: Craft supply

1 Cut 4-6 concentric circles from satin,
with the largest being about 5 1/2".

2 Using a hand-held lighter (or candle
flame, or heat embossing gun), heat
the edges of each circle until they melt
slightly and curl.

3 Starting with the base (largest) circle,
hot glue the circles together, large to
small.



4



5



4 Glue rhinestones or beads to the center of the topmost flower.

5 Hot glue the flower to a headband.

Glue a felt circle to the back of the base flower (either before or after gluing it to the headband) to give the flower more support.